

HARRY'S HOTLIST



THE HANGAR

RIVER SEVERN



FOREGATE
STATION

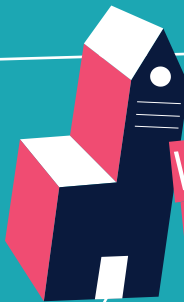


SWAN
THEATRE

THE HIVE



TRAMPS
NIGHTCLUB



WORCESTER
CATHEDRAL



BOSTON
TEA PARTY



SABRINA
BRIDGE



VUE CINEMA



2019
2020

YOUR SU PRESIDENTS'
GUIDE TO STUDENT LIFE
IN WORCESTER.

HELLO!



WELCOME TO WORCESTER!

Our job as a Students' Union is to get as many of you as possible involved in every aspect of university life. And sometimes that means taking the time to get away from campus and explore the local area. This directory is a short guide to show you all the great events, activities and days out in Worcestershire. We'll also point you towards some of the best places to eat and drink in the city, and give you the info you need on all the essentials like travel and shopping.

So make sure you get out there and explore everything that's on offer!

Harry

Students' Union President



CONTENTS

- 2 Introduction
- 3 Out and About
- 4 Entertainment
- 5 Sport
- 6 Eat and Drink
- 7 Nightlife
- 8 Key Events
- 9 Further Afield
- 10 Key Services
- 11 Contact Information

CONTACT



01905 543210



www.worcsu.com



Worcester Students' Union,
University of Worcester,
Henwick Grove
St John's
Worcester
WR2 6AJ

OUT AND ABOUT

A stroll through the park...

GHELUVELT PARK

An attractive park located just outside the city centre with picturesque walkways, bandstand, tennis courts, and outdoor table tennis.

Website: www.worcester.gov.uk/gheluvelt-park

CRIPPLEGATE PARK

Located just outside of the city centre opposite the County Cricket ground, this park has lovely walks, tennis court, and is host to a number of events and mini-festivals throughout the year.

MALVERN HILLS

An area of outstanding beauty right on your doorstep and a great place to go for some fantastic walks and even better views. Trains to Malvern run every 20-40 minutes from Worcester stations for under £4 with a student railcard and the hills are just a short stroll from the station at Great Malvern.



WORCESTER CATHEDRAL

Dominating the skyline, the Cathedral is one of the iconic landmarks of the city and is the perfect place to explore and discover Worcester's history. It's also where our graduation ceremonies are held each November.

Website: www.worcestercathedral.co.uk

EASTNOR CASTLE

Just a short drive (or hike across the hills) from Malvern, Eastnor is an imposing 19th Century revival castle with over 5000 acres of parkland and gardens. Entry to the impressive grounds is just £8.50 and entry to the grounds and castle starts at £12.50.

Website: www.eastnorcastle.com

RIVER SEVERN

If you ever feel like a relaxing walk, there are some lovely walks in Worcester along the River Severn both ways from Sabrina Bridge. During the summer months you can also take a cruise along the river. Tickets start at £7 for an hour long trip.

Entertainment

BOWLING TO PERFECTION

Worcester Bowl is located just a short drive from the St John's Campus and city centre and offers bowling, pool tables, table tennis and an arcade. Student discounts are available.

Website: www.worcesterbowl.co.uk



THE SHOW MUST GO ON

Worcestershire has three theatres, The Swan Theatre, Malvern Theatre and Huntingdon Hall, all offering a wide range of shows and events. From Shakespeare, to comedy, to live music, there's something for everyone to enjoy.

Websites:

www.worcesterlive.co.uk &

www.malvern-theatres.co.uk

POPCORN TIME

Vue and Odeon cinemas are both located in the city centre, showing all the latest blockbusters.

TOTUM

Make sure you download the TOTUM app as soon as you can. The app will give you some amazing deals and discounts at a whole load of national and local businesses. And you can also purchase a TOTUM membership to get even more exclusive offers.

Website: www.totum.com

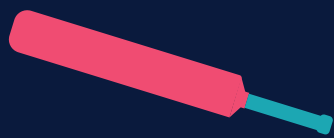


MUSEUMS

Worcester has a number of exciting and informative museums dedicated to our local history. Enjoy stories about the Civil War at the Commandery, relive the past at the Tudor House Museum, or discover one of our historic trades at the Royal Worcester Porcelain Works.

Website: www.visitworcester.co.uk





Sport



WORCESTER CRICKET CLUB

First class cricket in one of the most picturesque grounds in England. And for fans of white ball cricket, Worcestershire are one of the best teams in country regularly reaching the knockout stages of the One-Day Cup and T20 Blast.

Website: www.wccc.co.uk



WORCESTER RACECOURSE

The racecourse is located in between St Johns and City Campus and the race season runs from May until October. It all kicks-off in style with our Student Race Day, for just £10 for pie, pint and entry.

Website: www.worcester-racecourse.co.uk



WORCESTER WARRIORS

Watch Premiership rugby at one of the country's most atmospheric grounds. This year Warriors will be competing at the highest level in England and in the European Challenge Cup. Discounted student tickets start at just £20.



worcester
racecourse

EAT AND DRINK



CATHEDRAL SQUARE

Offering a range of bars, restaurants, and shops, Cathedral Square is a brand new development in Worcester city centre. There's something for everyone to enjoy with most venues offering student discounts for anyone with a TOTUM membership.

Website: www.cathedralsquare.co.uk



Domino's®

Keep an eye out for Dominos on campus all year round, including their free pizza giveaways at Welcome Fair and Refreshers. And don't forget all University of Worcester students get two for one on pizzas every night of the week using the code PIZZA241 when you order online.

Website: www.dominos.co.uk

IN PIZZA
WE CRUST



Boston Tea Party

Right in the city centre, Boston Tea Party is a great place for catching up with friends over coffee and cake. It's also the place to go for a big breakfast to help you recover from the night before.



Nightlife

MODE SPORTS BAR

Mode is the perfect place to watch the biggest live sporting events while enjoying some great food and fantastic drinks deals. And anyone with a Tramps VIP Card can get 20% off all food and drink throughout the year.

Website: www.modeworcester.com

TRAMPS

NIGHTCLUB WORCESTER

Home of the biggest and best nights out in Worcester. Tramps host Play every Wednesday night – your official student night out with great drinks deals all night long. And on Saturdays it's a Glam takeover, with guest appearances and free giveaways every week.

THE HANGAR

Located on campus in the SU building, The Hangar is your student bar. From quiz nights to Karaoke, to student-run events, there's always something going on. And we have everything you could ever want from your campus bar – VKs, cocktails, and slush puppies!

Website: www.worcsu.com/thehangar



KEY EVENTS



WORCESTERSHIRE PRIDE!

Taking place every September, Worcestershire Pride features a wide range of events, including their Pride Parade through the city centre.

Website: www.worcestershirepride.org

CELEBRATION WEEK

End the year in style with a massive celebration of all the achievements of our students. All students are invited to join us for the Union Awards and Colours Ball, held in the University Arena at the end of May.

Website: www.worcu.com/celebrationweek
www.visitworcester.co.uk/food-festival



VICTORIAN FAYRE & MARKET

Taking place on the last weekend of November every year, the Victorian Fayre and Market is one of the biggest events held in the County. This is a great way to end the year, with lots of traditional stalls taking over the streets of Worcester.

Website: www.worcesterchristmasfayre.co.uk



WORCESTER FOOD FESTIVAL

The end of July sees over 60 local businesses taking over the high street to sell a range of delicious food and drink.

FURTHER AFIELD

WEST MIDLANDS SAFARI PARK

Lions, tigers, elephants, and rhinos are just some of the animals you can see at West Midlands Safari Park. Just a half hour drive from Worcester with student discounts available, this is a fantastic day out.

Website: www.wmsp.co.uk

BIRMINGHAM BULLRING

Right in the centre of Birmingham, the Bullring is a huge shopping centre with everything you could possibly need under one roof. There are regular trains from Worcester to Birmingham stations so you can be there in less than an hour.

Website: www.bullring.co.uk

TOTUM

Make sure you get your TOTUM Membership to start saving on a wide range of goods and services. Membership is available from the TOTUM website. And don't forget to download the TOTUM App to get exclusive online deals from local and national retailers.

Website: www.totum.com

THE HIVE

Your University library with thousands of books, archives, study spaces, and meeting rooms and event spaces. The Hive has everything you need to help you with your academic studies.

Website: www.thehiveworchester.org

GP SERVICES

One of the first things to do when you arrive in Worcester is sign up to a local GP service. Visit the NHS website to find out where your nearest service is located.

Website: www.nhs.uk

CADBURY WORLD

Chocolate lovers won't want to miss out on the delights of Cadbury World. Located in the Bournville area of Birmingham, you can tour 14 zones to find out all about the history of chocolate, how it's made, and bag yourself plenty of free samples.

Website: www.cadburyworld.co.uk



KEY SERVICES

SEXUAL HEALTH CLINIC

- The John Anthony Centre offers STI testing and treatment free of charge, with appointments available Monday to Friday.
- **Phone:** 0300 123 1731



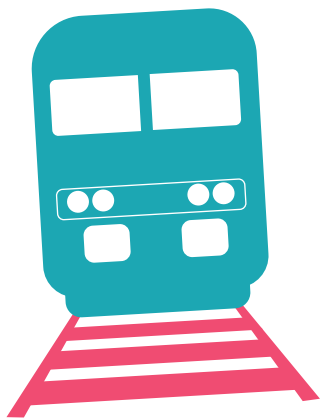
KEY SERVICES

Taxi

The SU is affiliated with Cathedral Cars who offer licensed taxis at student friendly rates. Fixed rates also apply from St Johns Campus to Tramps Nightclub and the city centre.

Website: www.cathedralcars.net

Phone: 01905 675990

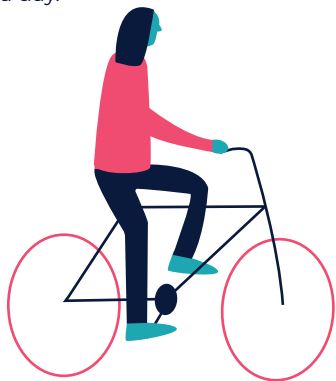


Train

Worcester has two stations, Worcester Foregate Street and Worcester Shrub Hill. There are regular services with great links to Birmingham, London and Bristol.

Bus

Worcester's main bus station is in the city centre (just opposite Tramps). The 31 service stops on campus just outside the Students' Union and you can get unlimited travel from just £3 a day.



Bike Store

Located in Avon on St Johns Campus, the Bike Store offers refurbished bikes at a good price, along with any maintenance you may need. The Store is open 12pm-2pm Tuesdays and Wednesdays during the semester.

IMPORTANT CONTACT INFORMATION



WELCOME DESK

Your main point of call for all things SU related including Societies, Clubs, Volunteering, and our Help and Advice Service.

Email: studentsunion@worc.ac.uk

Phone: 01905 543210

FIRSTPOINT

Based in the Peirson Study and Guidance Centre, FirstPoint offer information and support throughout your time at University.

Email: firstpoint@worc.ac.uk

Phone: 01905 542551

SECURITY

Our Security team are on hand 24-7 to keep you safe during your time here. You can find them on campus in St Johns and down at City.

Phone: 01905 855000

Mobile: 07977 983956

STUDENTS' UNION



01905 543210



studentsunion@worc.ac.uk



www.worcsu.com



[/worcesterSU](https://www.facebook.com/worcesterSU)



[@worcesterSU](https://twitter.com/worcesterSU)



[@worcSU](https://www.instagram.com/worcSU)

